

**Autodesk®**  
Moldflow® Insight

Plastics made perfect.



# Simulation: Early and Often

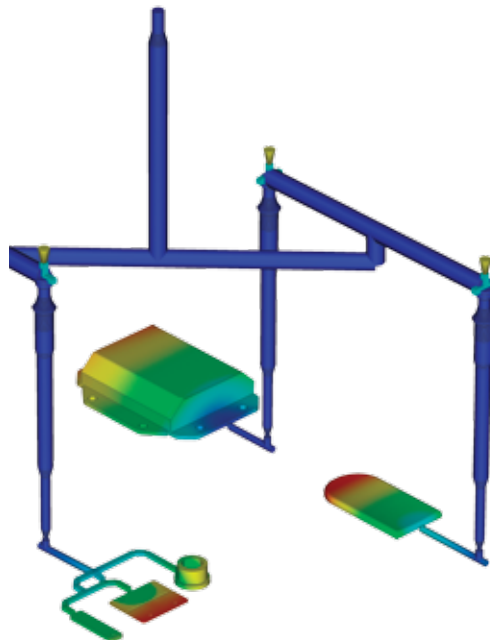
With the use of plastic parts on the rise in almost every industry and the pressure to reduce costs and cut time to market, the need for simulation tools that provide deep insight into the plastics injection molding process has never been in greater demand.

## Facing these issues?

- To remain competitive, time-to-market is often the critical factor in the success or failure of a product.
- Molded part defects discovered in manufacturing delay production, cost time and money to fix, and in the worst case, may require new tooling to resolve.
- Need to accurately simulate real-world injection molding conditions and validate analysis results.
- It is difficult to communicate valuable simulation results to other members of a design-to-manufacturing team.

Discover why Autodesk Moldflow Insight is the right product for your plastics injection molding simulation needs.

Autodesk® Moldflow® Insight software, part of the Autodesk® solution for Digital Prototyping, provides a complete set of advanced plastics engineering simulation tools for use on digital prototypes. Providing in-depth analysis and optimization of plastic parts and their associated molds, Autodesk Moldflow Insight software offers powerful functionality that can simulate the most advanced molding processes in use today. Currently employed by some of the top manufacturers in the automotive, medical, consumer electronics, and packaging industries, Autodesk Moldflow Insight reduces the need for physical prototypes and helps companies get innovative products to market faster.

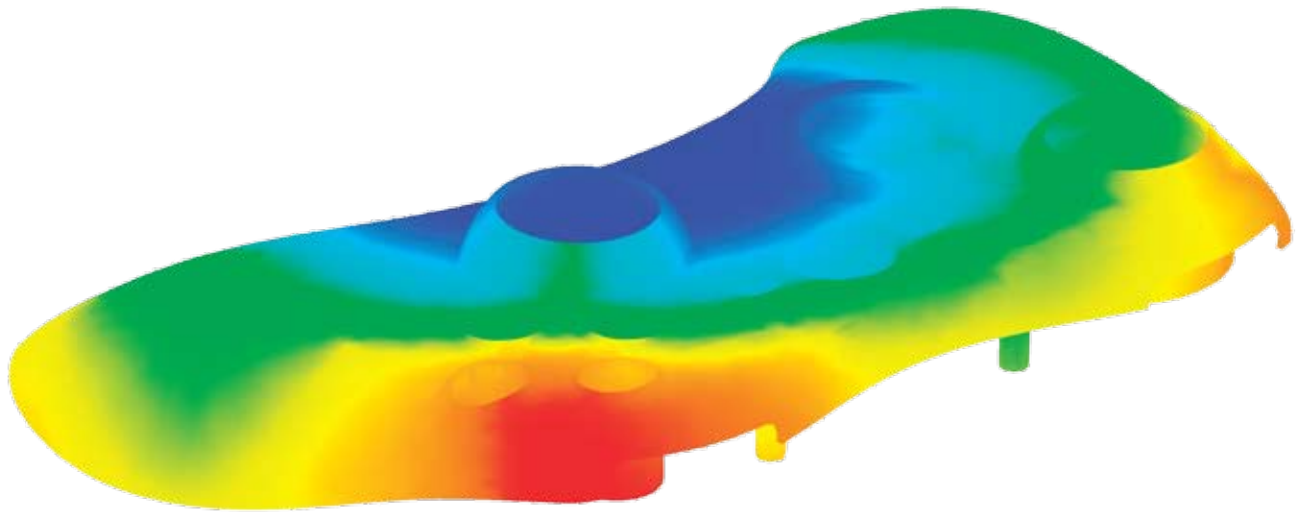


## Plastics Engineering Simulation

Autodesk Moldflow Insight allows you to simulate the filling and packing phases of the injection molding process to help predict the flow behavior of plastic melts and help achieve high quality manufacturing. Engineers can optimize gate locations, balance runner systems, evaluate processing conditions and predict and correct molded part defects. Mold makers can analyze the effects of non-uniform mold temperatures, determine optimized valve-gate timing sequences, and compare flow through hot versus cold runner systems. Optional modules extend simulation capabilities beyond traditional thermoplastics injection molding to more leading edge molding processes including gas-assist, co-injection and injection compression.

## Early Optimization

Moldflow Insight allows you to experiment with “what if” scenarios using different materials, part geometries, mold designs, and processing conditions before committing to a final design. This ability to evaluate different scenarios throughout the entire product development process results in higher-quality products. Autodesk Moldflow Insight helps manufacturers “get it right the first time”, so they can avoid the cost and time delays that frequently occur during the manufacturing phase.



### Specialized Simulation Tools

Autodesk Moldflow Insight addresses the broadest range of design and manufacturing issues associated with the plastics molding process. It includes specialized simulation tools for practically every molding process involved in the creation of plastics parts and molds, including niche and leading edge processes. The software enables users to simulate not only the most common, but many unique molding techniques for those times when a specialized manufacturing process is needed to meet critical design requirements. With technology advances that span material characterization, process analysis, and geometry capability, Autodesk Moldflow Insight represents the forefront of plastics simulation; helping to shorten development cycles, reduce costs, and allow teams to spend more time innovating.

### Extensive Plastics Database

Autodesk Moldflow Insight includes one of the largest plastics material databases of its kind. Users have access to over 8,000 grades of commercial plastics with the most up-to-date & accurate material data, so they can confidently evaluate various material candidates or predict molded part properties that could have a critical impact on the performance of the end-use application. There's also an Energy Usage Indicator and Resin Identification Codes so designers can further decrease manufacturing energy requirements and choose materials that contribute to sustainability initiatives.

### In-Depth Analysis

Autodesk Moldflow Insight gives engineers in-depth analysis capabilities to help them tackle even the toughest-to-solve manufacturing problems. With a high degree of confidence in analysis results, for even the most complex geometry, Autodesk Moldflow Insight enables engineering teams to predict potential manufacturing defects before any tooling is cut, virtually eliminating the need for time-consuming and costly mold rework.

### Customized Results and Reporting

With complete control over analysis process parameters and extensive and customizable results, Autodesk Moldflow Insight enables you to correlate results to real-world processing conditions with a high degree of accuracy, helping you to predict potential problems, and take corrective action to avoid them. Once the analysis is complete, you can use the automated report generation tools to share reports in popular formats (HTML, Microsoft® Word, and PowerPoint®), allowing valuable simulation data to be shared with other members of the design-to-manufacturing team, promoting collaboration and streamlining development.

### Autodesk Moldflow Insight Product Line

With different product configurations that offer specific levels of functionality, Autodesk is dedicated to helping CAE analysts, plastics design engineers, mold makers and molding professionals create accurate digital prototypes and bring better products to market at less cost.



# Digital Prototyping for the Manufacturing Market

Autodesk is a world-leading supplier of engineering software, providing companies with tools to experience their ideas before they are real. By putting powerful Digital Prototyping technology within the reach of mainstream manufacturers, Autodesk is changing the way manufacturers think about their design processes and is helping them create more productive workflows. The Autodesk approach to Digital Prototyping is unique in that it is scalable, attainable, and cost-effective, which allows a broader group of manufacturers to realize the benefits with minimal disruption to existing workflows, and provides the most straightforward path to creating and maintaining a single digital model in a multidisciplinary engineering environment.

#### **Learn More or Purchase**

Access specialists worldwide who can provide product expertise, a deep understanding of your industry, and value that extends beyond your software purchase. To purchase Autodesk Moldflow Insight software, contact an Autodesk Premier Solutions Provider or Autodesk Authorized Reseller. Locate a reseller near you at, [www.autodesk.com/reseller](http://www.autodesk.com/reseller).

To learn more about Autodesk Moldflow Insight, visit [www.autodesk.com/moldflow](http://www.autodesk.com/moldflow).

#### **Autodesk Learning and Education**

From instructor-led or self-paced classes to online training or education resources, Autodesk offers learning solutions to fit your needs. Get expert guidance at an Autodesk Authorized Training Center (ATC®) site, access learning tools online or at your local bookstore, and validate your experience with Autodesk certifications. Learn more at [www.autodesk.com/learning](http://www.autodesk.com/learning).

#### **Autodesk Services and Support**

Accelerate return on investment and optimize productivity with innovative purchase methods, companion products, consulting services, support, and training from Autodesk and Autodesk authorized partners. Designed to get you up to speed and keep you ahead of the competition, these tools help you make the most of your software purchase—no matter what industry you are in. Learn more at [www.autodesk.com/servicesandsupport](http://www.autodesk.com/servicesandsupport).

#### **Autodesk Subscription**

Get the benefits of increased productivity, predictable budgeting, and simplified license management with Autodesk® Subscription. You get any new upgrades of your Autodesk software and any incremental product enhancements, if these are released during your Subscription term. In addition, you get exclusive license terms available only to Subscription members. A range of community resources, including web support direct from Autodesk technical experts, self-paced training, and e-Learning, help extend your skills and make Autodesk Subscription the best way to optimize your investment. Learn more at [www.autodesk.com/subscription](http://www.autodesk.com/subscription).

Autodesk is committed to sustainability. This brochure is printed on 25 percent post consumer waste recycled paper.

Autodesk, ATC, and Moldflow are registered trademarks or trademarks of Autodesk, Inc., and/or its subsidiaries and/or affiliates in the USA and/or other countries. All other brand names, product names, or trademarks belong to their respective holders. Autodesk reserves the right to alter product offerings and specifications at any time without notice, and is not responsible for typographical or graphical errors that may appear in this document. © 2009 Autodesk, Inc. All rights reserved. BR0A1-000000-MZ84